



# Senlis

## DISCOVER THE ROYAL OLD QUARTER





# SEN LIS,

*a true open-air  
museum*



**Located at the convergence of several major forests and a magnet for film directors looking for the perfect set, Senlis boasts exceptional architectural and cultural heritage.**

Come and discover the riches of the ancient city of the Sulbanectes, named Augustomagus by the Romans. The Romans protected the city in the 3rd century with a 4-metre-thick wall flanked by 30 towers, the majority of which still exist today. Outside the walls, you'll also find a Gallo-Roman arena built in the 1<sup>st</sup> century – the only one of its kind in the Hauts-de-France region. A Gallo-Roman wall forms a tight circle around the cobbled streets where you will see: the remains of the royal chateau where the Kings of France lived; the Saint-Maurice Priory constructed close to the royal palace in the 13<sup>th</sup> century on the request of King St Louis; Notre Dame cathedral (12<sup>th</sup>-16<sup>th</sup> century) displaying four centuries of change and presenting all aspects of Gothic art; and the Saint-Frambourg Chapel built around 1170.

During the reign of Philippe Auguste, the city was protected by a second rampart. The medieval fortifications (13<sup>th</sup>-16<sup>th</sup> century) offer a lovely walk around the heritage site along the Nonette River. Numerous religious communities settled in Senlis: the 'Charité', the 'Capuchins', the 'Carmelites', and the 'Présentation', near to Saint-Vincent Abbey founded by the Queen of France Anne de Kiev around 1060.

The former Church of Saint-Pierre (11<sup>th</sup>-17<sup>th</sup> century). In the 17<sup>th</sup> and 18<sup>th</sup> centuries, city officials had remarkable private mansions built behind monumental gates. The Hôtel Dufresne de Saint-Leu (18<sup>th</sup> century) was the headquarters of Maréchal Foch from 1916 to 1918, and it is here that he prepared the armistice for World War I. Respecting nature, the ecological park offers a pleasant walk around ornamental lakes, where visitors can appreciate a great diversity of fauna and flora.





# Tour A

FROM THE ROYAL CHATEAU TO THE CATHEDRAL AND THE SHOPPING STREET, WANDER AROUND THE 3RD CENTURY GALLO-ROMAN WALL.

## 1 Royal Palace Park

FREE ADMISSION

- Remains of the royal chateau where the king Hugues Capet was elected in 987
- Gallo-Roman wall (3<sup>rd</sup> century)
- Saint-Maurice priory: Founded in 1262 by King Saint-Louis
- Hunting Museum
- Copper beech
- Spahis Museum

ADMISSION CHARGE

FREE ADMISSION

## 2 Hôtel du Vermandois

Built by Raoul de Vermandois in the 12<sup>th</sup> century and reconstructed in the 16<sup>th</sup> century with new features including a turret housing a spiral staircase.

## 3 Notre-Dame Cathedral

12<sup>th</sup>-16<sup>th</sup> century

Major witness to the evolution of the Gothic style.

- The west doorway: first representation of the Triumph of the Holy Virgin.
- 78-metre-high spire built in the 13<sup>th</sup> century

## 4 Former episcopal palace Art and Archeology Museum

ADMISSION CHARGE

## 5 Rue Saint-Hilaire

Saint-Frambourg chapel, apse and Gallo-Roman wall (3<sup>rd</sup> century).

## 6 Place de la Halle

Former home of artist Thomas Couture (1815- 1879). Born in Senlis, Couture was Manet's tutor. Former belfry.



## 4 Passage and Square Vernet

## 5 Saint-Frambourg chapel

OPEN ONLY FOR CONCERTS

10<sup>th</sup>-13<sup>th</sup> century. Founded by Queen Adélaïde. It became the Cziffra Foundation auditorium in 1973.

## 6 Rue du Petit Chaalis

N°5 is a house that once belonged to Chaalis Abbey.

## 7 Rue de la Treille

Half-timbered house.

Hôtel d'Hérivaux (16<sup>th</sup> century).

- The 'false door'.

## 8 Rue du Puits Tiphaine

N°1 is the former home of the artist and painter Séraphine (1864- 1942).

## 9 Rue des Vétérans

## 10 Place Saint-Maurice

Private mansions.

## 11 Rue du Chat-Haret

Hôtel de Cornouaille (17<sup>th</sup>-18<sup>th</sup> century)

## 12 King's garden

• Gallo-Roman wall (3<sup>rd</sup> century)  
During the 3<sup>rd</sup> century, the Romans built a thick, 800 metre-long wall and 30 towers, most of which are still standing. Augustomagus (the Roman name for Senlis) was then enclosed in an 18-acres fort which ensured security for its administration and inhabitants: the Sulbanectes.

## 13 Place Mauconseil

Choir house (16<sup>th</sup> century).

## 14 Rue aux Flagards

Cathedral and bishop's garden





# Tour B

PRIVATE MANSIONS, COBBLED STREETS FULL OF FLOWERS, THE SAINT-VINCENT QUARTER AND ITS RAMPARTS GIVING YOU GREAT VIEWS OF THE OLD TOWN!

**9 Former Church Saint-Pierre**  
11<sup>th</sup>-17<sup>th</sup> century. The most important parish church in Senlis has had various functions over the years and became a centre for cultural activities in 1974.

**10 Rue Bellon**  
The walls of Hôtel Saint Simon (16<sup>th</sup> century mansion)

**11 Monument commemorating French-Moroccan friendship**  
by Paul Landowski, dismantled and shipped from Casablanca to Senlis by the French Navy in 1965.

**Rempart de l'escalade**  
Stairway to Rue de Meaux.

**Garden of the Porte de Meaux bastion**  
Old archery grounds. Retrace your steps and take the stairs to the left.

**12 Saint-Vincent royal abbey**  
1066 (Anne de Kiev), 12<sup>th</sup>-17<sup>th</sup> century. Used as a military hospital, barracks and spinning mill, it has now become a private high school. Open only on European Heritage Days.



15



9



10



11



13



12

## Medieval streets

- Rue Saint-Yves à l'Argent
- Rue des Bordeaux
- Rue des Vignes: Église de la Charité (18<sup>th</sup> century)
- Rue de la Cognée
- Portail de la Présentation (17<sup>th</sup> century)
- Rue de la Tournelle
- Rempart Saint-Vincent

## Walk on the ramparts

The ramparts of Philippe Auguste, 13<sup>th</sup>-16<sup>th</sup> century – composed of towers, gates and posterns – altered as weapons evolved; for example the bastions and advanced spurs appeared during the reign of François I.

## Rue de la Poterne

Go down the stairs, pass under the ramparts and enjoy the bucolic setting of the river Nonette.

## Passageway and former Carmelite convent

17<sup>th</sup> century convent and 14<sup>th</sup> century chapel. Take the Carmelite staircase.

## Rue Vieille de Paris

Hôtel de l'Ange (16<sup>th</sup> century).

## Rue des Cordeliers, Hôtel du Flamant

Former convent (15<sup>th</sup> century).

## Rue du Haubergier

16<sup>th</sup> century mansion. From 1926 to 1982 this residence was the town museum.

## Rue de l'Apport au Pain

In the direction of 'Place Henri IV' square.

## City hall (15<sup>th</sup>-18<sup>th</sup> century)

At the end of the 12<sup>th</sup> century the city commissioned the building of a town hall. Rebuilt in 1495, it can still be admired today. Look for Henri IV's bust on the façade.



14



16



17



18





FROM THE 1ST CENTURY RIGHT THROUGH TO THE 20TH CENTURY, THIS TOUR TAKES YOU ON A JOURNEY THROUGH TIME, FROM THE ARENA TO THE RECONSTRUCTION OF THE STATION AFTER WORLD WAR I.

## 19 Place Henri IV

In the Middle Ages, some streets were named according to the occupation of their inhabitants and the activities that took place there: for example 'Cheese Street', 'Calves Square', and even 'Market for Rabbits and Broomsticks'!

## 20 Former Church of Saint-Aignan

11<sup>th</sup>-16<sup>th</sup> century. One of the Senlis' eight churches and built around 1029.

## 21 Rue aux Prêtres Place de la Fontaine des Étuves

A small natural spring is believed to have been the source of the thermal baths.



## Rue Saint-Gilles, Rue du Lion

Access to the ramparts is via the stairs. Tower of the old archery grounds (16<sup>th</sup> century). View of the old town and private gardens.

## 22 Place des Arènes

Anne of Kiev's statue, a gift from Pechersk (Ukraine) to the town of Senlis in 2004.



27



19



20



21



22

## 23 Gallo-Roman arena

Built during the 1<sup>st</sup> century AD, this is the only arena of its kind in the Hauts-de-France region. Abandoned in the 6<sup>th</sup> century, it was rediscovered by Félix Vernoin in 1865. Open on National Archeology Open Days and European Heritage Days.

## 24 Place Gérard de Nerval

"I found an indescribable joy walking the streets and alleys of the old Roman city..."  
Gérard de Nerval

## Neighbourhood of the sub-prefecture

Rue de Beauvais, Place aux Gâteaux, Rue de la Poulaille. Outstanding private mansions from the 17<sup>th</sup> and 18<sup>th</sup> centuries.

## 25

## Boulevard Pasteur



Here in 1827, boulevards replaced ramparts and moats. Part of the GR12 (national hiking route) cuts through the town.

## Cours Thoré-Montmorency

'Champs de Mars' celebrations in honour of the Republic took place here in 1790 and 1791.

• Statue of the painter Thomas Couture (1815-1879).

## 26

## 27 Bus station

The station was rebuilt in 1922 by an Alsatian architect following damage sustained during World War I.

Only on guided tour  
From April to October, each  
1st Sunday of the month at  
3 pm. Departure from the  
tourist office.



23



24



25



26



Place du Chalet, bronze deer, copy of a statue of Pierre-Louis Rouillard (19<sup>th</sup>).



# Museums



© Alain Pettit

ADMISSION CHARGE

## ART AND ARCHEOLOGY MUSEUM

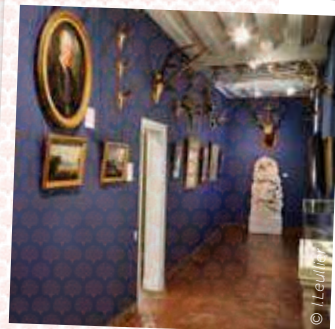
Place Notre-Dame

Tél.: +33 (0)3 44 24 86 72

In situ there are remains of a Gallo-Roman house, a collection of ex-votos from the forest of Halatte, the bronze base of a statue of Emperor Claudius, plus the sculpture 'Head of a Bearded Man' (13<sup>th</sup> century). Also displayed: the works of Senlis painters Thomas Couture and Séraphine Louis.



© C. Schryer



© H. Leu

## HUNTING MUSEUM

(located in the royal palace park)

Parvis Notre-Dame

Tél. +33 (0)3 44 29 49 93

Paintings, drawings, collections of old hunting uniforms, weapons, hunting horns, trophies and a variety of works of art all on the theme of hunting.

ADMISSION CHARGE

FREE ADMISSION

## SPAHIS MUSEUM

(located in the royal palace park)

Parvis Notre-Dame

Tél. +33 (0)3 44 26 15 50

Open on Saturdays and Sundays only, from 10 am to 1 pm and from 2 pm to 6 pm. Dedicated to the 150-year history of this North African cavalry, which had a special place in the French army (artefacts, costumes, flags etc.).



© Alain Pettit

OPEN ONLY FOR CONCERTS

## SAINT-FRAMBOURG CHAPEL

Saint-Frambourg was erected in the 10<sup>th</sup> century by Queen Adélaïde, Hugues Capet's wife. Restored in 1973 by the pianist Georges Cziffra, it became an auditorium for 450 spectators. Discover stained glass by the famous painter Joan Miró.

[www.fondation-cziffra.com](http://www.fondation-cziffra.com)



## THE HUNTING MUSEUM AND THE ART AND ARCHEOLOGY MUSEUM

Open from Wednesday to Sunday, from 10 am to 1 pm and from 2 pm to 6 pm. Closed every Monday and Tuesday, and also closed on 1st January, 1st May and 25<sup>th</sup> December. Admission to the museums is free of charge every first Sunday of the month.

For more information:

- please call +33 (0)3 44 67 37 37 or +33 (0)3 44 24 86 72
- or visit our websites [www.chantilly-senlis-tourisme.com](http://www.chantilly-senlis-tourisme.com) or [musees.ville-senlis.fr](http://musees.ville-senlis.fr)



Copper beech in the park of the royal palace



# The historic centre



**TOUR A**  
1,5 km

**TOUR B**  
2,1 km

**TOUR C**  
3,8 km

Green way  
Access



**Thematic panels**  
The monogram of the king Hugues Capet (Hugo Rex)

**Not to be missed...**

**P** Free car park  
**P** Parking meter  
**M** Museum

**Tourist Office**

0 50 m 100 m



## GUIDED TOURS OF THE TOWN



Qualified guides from Chantilly-Senlis Tourist Office are available to help you discover the exceptional architecture of Senlis plus iconic Chantilly, the remarkable places of interest on the Senlis to Ermenonville art and history trail, and the Oise Regional Nature Park.

### • *Groups*

Groups are welcome all year round by appointment. For bookings and information on all guided tours for groups please see our website or contact our sales department.

### • *Individuals*

From April to October, discovery tours and themed tours take place in French as follows:

First Sunday of the month at 3 pm – Gallo-Roman heritage tour

Third Sunday of the month at 3 pm – Discovery tour of the Old Quarter

All dates and times are available on request from the Tourist Office or on our website:

[www.chantilly-senlis-tourisme.com](http://www.chantilly-senlis-tourisme.com)

Tickets are available at the Tourist Office on Place du Parvis Notre-Dame, which is also the departure point for guided tours.

### • *Self-guided walking tours*

Documents detailing the following routes can be picked up at the Tourist Office:

- Follow in the footsteps of artist and painter Séraphine' (1 km trail around Senlis)
- Senlis during World War I' (5 km trail around Senlis)



## A Stroll in Nature

### FAMILY FUN TRAIL

Head out onto the cobbled streets of old Senlis on the lookout for clues, reliving the history of the town while having fun with your family at the same time! Unscramble the puzzles, spot the differences, and find answers to the questions.



Available at the Tourist Office or on [www.chantilly-senlistourisme.com](http://www.chantilly-senlistourisme.com).



### 'ACCUEIL VÉLO' FOR CYCLISTS

Our reception office has been awarded 'Accueil Vélo' accreditation meaning visitors touring the area by bike are guaranteed a warm welcome and excellent cycling services. Our establishment:

is less than 5km from a cycle route

- is well-equipped for cyclists requiring a repair kit
- offers a warm welcome with advice on routes, weather etc.
- provides a welcome booklet with all the information you need



Cycle routes are available on request from the Tourist Office or on the PNR Oise-Pays de France 'Rando Parc Oise' app, which can be downloaded using the QR code above.

## ECOLOGICAL PARK

You'll find entrances on Rue du Moulin Saint Rieul and Rue Séraphine Louis.

Free entrance.

Open every day (except in poor weather conditions) from 1st April to 30th September from

9 am to 7.30 pm, and from 1st October to 31st March from 9 am to 5 pm.

Contact : +33 (0)3 44 53 00 80



Created in 1993, along the banks of the river Aunette, the park extends over a vast area of more than 17 acres. Partly created as a leisure park to offer lovely walks around the water, and partly to preserve the natural marshland, it's a great place to observe wildlife.





# OFFICE DE TOURISME CHANTILLY-SENLIS

## BUREAU DE SENLIS

Place du Parvis Notre-Dame

## BUREAU DE CHANTILLY

73 rue du Connétable

**+33 (0)3 44 67 37 37**

[accueil@chantilly-senlis-tourisme.com](mailto:accueil@chantilly-senlis-tourisme.com)

[www.chantilly-senlis-tourisme.com](http://www.chantilly-senlis-tourisme.com)



@chantillysenlistourisme

La générosité naturelle  
Generous by nature



Hauts-de-France  
Tourisme



© photos : Chantilly-Senlis Tourisme



## By car

From Roissy-Charles de Gaulle airport

A1 motorway (25 mins.)

From Paris, Lille and Brussels

A1 motorway exit n°7 Chantilly or n°8 Senlis

From Beauvais-Tillé airport

N31 - D1016 (45 mins)



## Are you on foot?

Take the **bus line n°645** which connects Chantilly and Senlis!

**Line n°630** Picardie-Roissy stop in Senlis.



## By train

Paris Gare du Nord --> Chantilly-Gouvieux

TER: 25 mins.

RER line D: 45 mins.

